

FEATURED ALUM-A-LIFT SELF-PROPELLED EXTENDED-REACH BOOM LIFT

PROJECT 31011

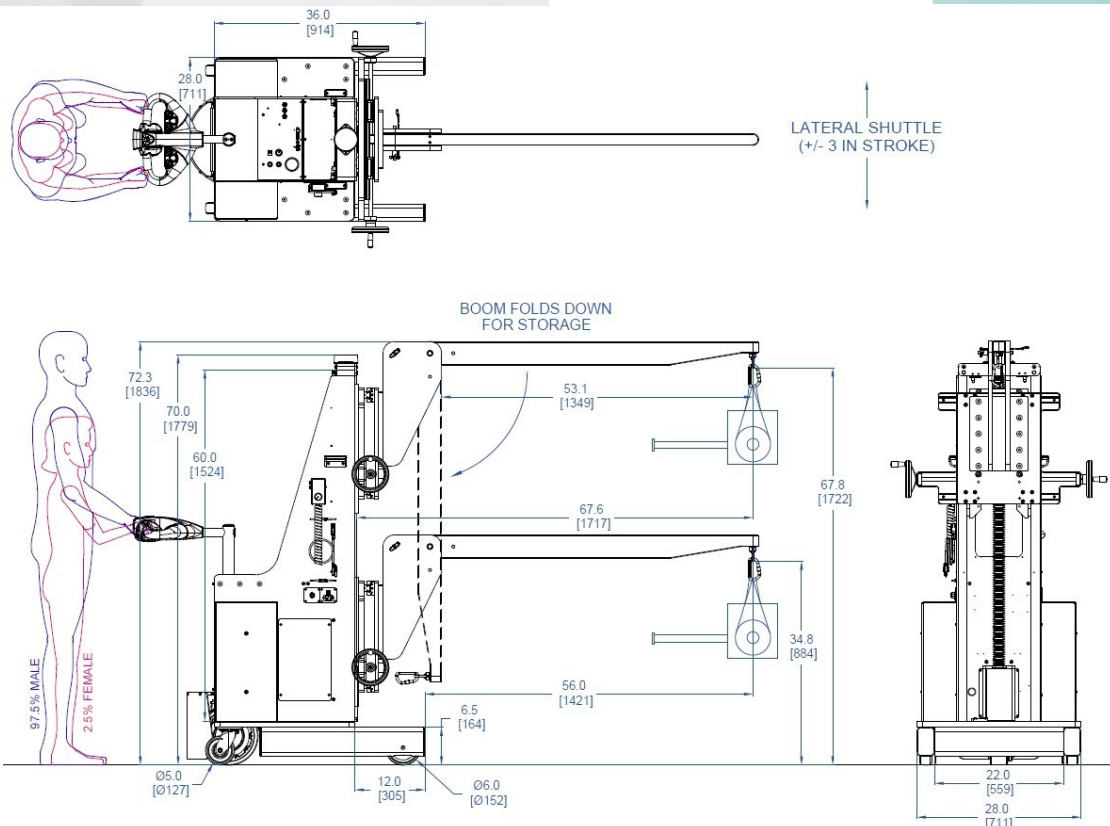


MODEL A800CSPD-60

FEATURING Swiveling Hoist Ring, Folding Boom, Manual Lateral Shuttle, Powered Drive Wheel

HANDLING 200 lb. [91 kg] Roller Dies

DETAILS A specialty film manufacturer needed to install roller dies on an embossing machine. The reach to the die station was over 52", and the machine provided no clearance underneath for forward-protruding lift legs. This lift uses a long boom to position the dies at the station, and the boom can be folded down for storage. The lift's legs are short and countermass is used for stability. A lateral shuttle was added to assist with positioning. Due to the total weight of the system, a powered drive wheel was included for easy, walk-behind operation, eliminating high push forces and associated ergonomic concerns.



alum-a-lift

13941 Veterans Memorial Hwy
Winston, GA 30187 USA
+1 770 489 0328

GET STARTED AT ALUM-A-LIFT.COM